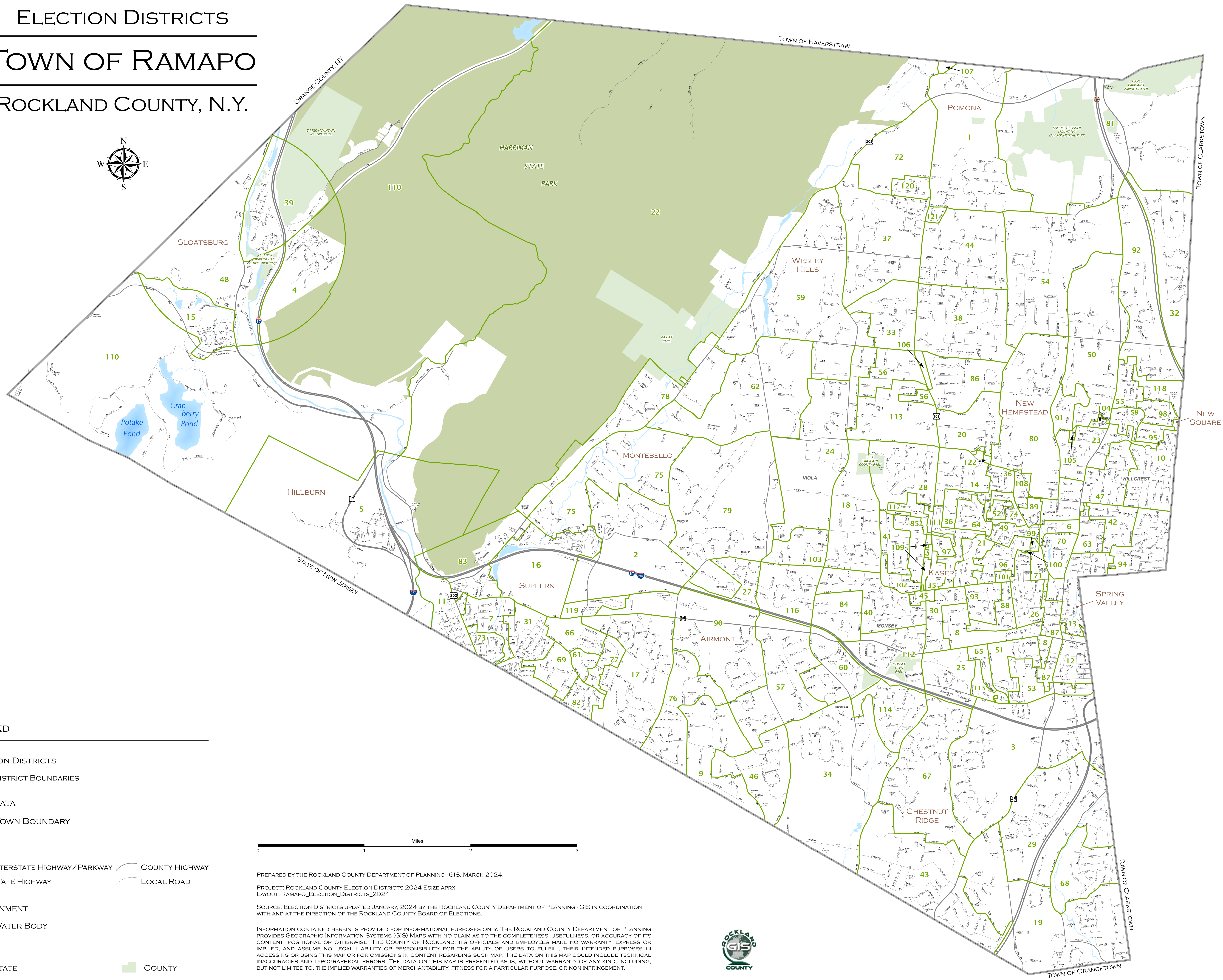
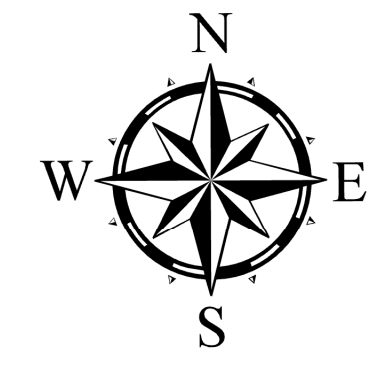


# ELECTION DISTRICTS

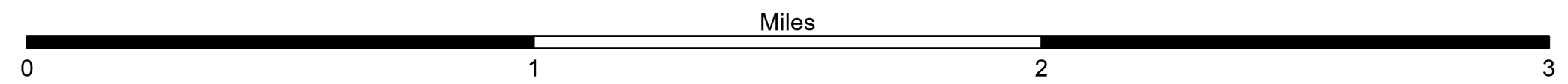
## TOWN OF RAMAPO

### ROCKLAND COUNTY, N.Y.



#### LEGEND

- ELECTION DISTRICTS**
- DISTRICT BOUNDARIES
- BASE DATA**
- TOWN BOUNDARY
- ROADS**
- INTERSTATE HIGHWAY/PARKWAY
  - STATE HIGHWAY
  - COUNTY HIGHWAY
  - LOCAL ROAD
- ENVIRONMENT**
- WATER BODY
- PARKS**
- STATE
  - COUNTY



PREPARED BY THE ROCKLAND COUNTY DEPARTMENT OF PLANNING - GIS, MARCH 2024.  
 PROJECT: ROCKLAND COUNTY ELECTION DISTRICTS 2024 ESISE.APRX  
 LAYOUT: RAMAPO\_ELECTION\_DISTRICTS\_2024  
 SOURCE: ELECTION DISTRICTS UPDATED JANUARY, 2024 BY THE ROCKLAND COUNTY DEPARTMENT OF PLANNING - GIS IN COORDINATION WITH AND AT THE DIRECTION OF THE ROCKLAND COUNTY BOARD OF ELECTIONS.

INFORMATION CONTAINED HEREIN IS PROVIDED FOR INFORMATIONAL PURPOSES ONLY. THE ROCKLAND COUNTY DEPARTMENT OF PLANNING PROVIDES GEOGRAPHIC INFORMATION SYSTEMS (GIS) MAPS WITH NO CLAIM AS TO THE COMPLETENESS, USEFULNESS, OR ACCURACY OF ITS CONTENT, POSITIONAL OR OTHERWISE. THE COUNTY OF ROCKLAND, ITS OFFICIALS AND EMPLOYEES MAKE NO WARRANTY, EXPRESS OR IMPLIED, AND ASSUME NO LEGAL LIABILITY OR RESPONSIBILITY FOR THE ABILITY OF USERS TO FULFILL THEIR INTENDED PURPOSES IN ACCESSING OR USING THIS MAP OR FOR OMISSIONS IN CONTENT REGARDING SUCH MAP. THE DATA ON THIS MAP COULD INCLUDE TECHNICAL INACCURACIES AND TYPOGRAPHICAL ERRORS. THE DATA ON THIS MAP IS PRESENTED AS IS, WITHOUT WARRANTY OF ANY KIND, INCLUDING, BUT NOT LIMITED TO, THE IMPLIED WARRANTIES OF MERCHANTABILITY, FITNESS FOR A PARTICULAR PURPOSE, OR NON-INFRINGEMENT.

